

DAIRY DR CAMPGROUND DEMO AND SITE RESTORATION

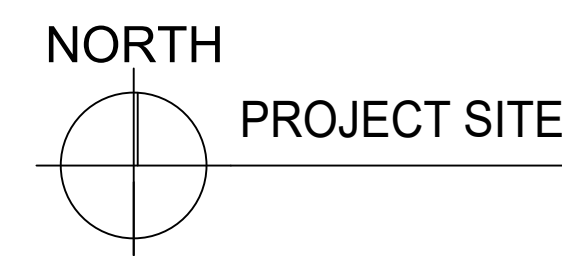
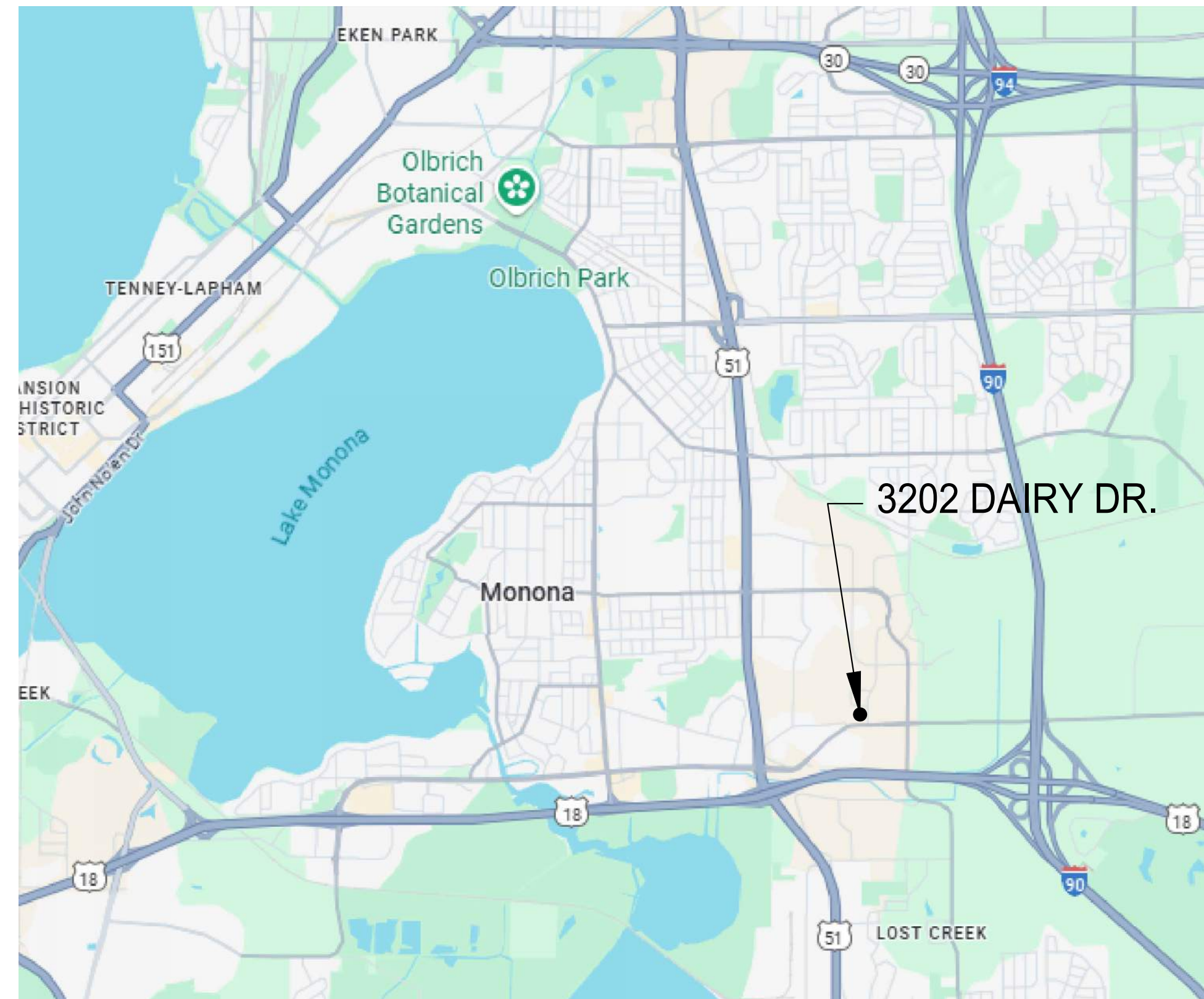
CONTRACT #9681
 SEPTEMBER 03, 2025

3202 DAIRY DRIVE
 MADISON, WI 53718

EXHIBIT "A"



CITY OF MADISON
 DEPT OF PUBLIC WORKS
 ENGINEERING DIVISION
 CITY COUNTY BLDG RM 115
 210 MARTIN LUTHER KING JR BLVD
 MADISON, WI 53703
 PHONE: 608-266-4751



GENERAL NOTES:

1. SEE SPECIAL PROVISIONS AND CONTRACT EXHIBITS AND REF DOCS FOR ADDITIONAL INFORMATION.
2. SEE BID REF DOC FOR THE REUSE AND RECYCLING PLAN FOR THE RECYCLING PLAN AS PART OF THIS CONTRACT. IDENTIFIED ITEMS TO BE REMOVED PRIOR TO FINAL DEMOLITION.
3. THE CONTRACTOR IS RESPONSIBLE FOR REPAIRING OR REPLACING ANY EXISTING UTILITIES, STRUCTURES, CURB, LAWN, TREES, PAVEMENT, ETC. DAMAGED THROUGH CONSTRUCTION ACTIVITIES AT THEIR OWN EXPENSE.
4. CONTRACTOR SHALL RESTORE TERRACE AND SIDEWALK AT THE CONSTRUCTION ENTRANCE DURING FINAL GRADING AND SEEDING PER CITY OF MADISON PUBLIC WORKS STANDARD SPECIFICATIONS.
5. CONTRACTOR SHALL PROVIDE PROJECT MANAGER WITH ALL SHIPPING MANIFESTS FOR MATERIALS IN AND OUT OF THE PROJECT SITE.
6. MULTIPLE UNDERGROUND UTILITIES EXIST IN THE PROJECT AREA. THE CONTRACTOR SHALL CONTACT DIGGERS HOTLINE PRIOR TO COMMENCING WORK.
7. CONTRACTOR TO COORDINATE FINAL REMOVAL OF ALL UTILITY LATERALS.
8. THE CONTRACTOR IS RESPONSIBLE FOR COMPLYING WITH AND OBTAINING PERMITS FROM ALL AGENCIES AND AUTHORITIES HAVING JURISDICTION.
9. ALL SITE AND RIGHT OF WAY TO BE RESTORED BY THE CONTRACTOR PER CITY OF MADISON PUBLIC WORKS SPECIFICATIONS.
10. ALL DISTURBED AREA TO BE GRADED AND REPLACED WITH TOPSOIL, SEED AND MULCH PER CITY OF MADISON PUBLIC WORKS STANDARD SPECIFICATIONS. PROPOSED AREA OF DISTURBANCE IS APPROXIMATELY
11. PRIVATE PROPERTY TREES SHALL BE PROTECTED WITH FENCING A MINIMUM OF 5'-0" FROM TRUNK IN ALL DIRECTIONS. DO NOT REMOVE FENCING FOR SITE OR EQUIPMENT ACCESS. CONTRACTOR SHALL TAKE PRECAUTIONS AGAINST EQUIPMENT SCARING, SOIL COMPACTION AND CUTTING OF ROOTS OVER 3" IN DIAMETER. NO PRUNING. SEE PUBLIC WORKS STANDARD SPEC 107.13.

SHEET INDEX:

- TS1 TITLE SHEET & GENERAL NOTES
- EX1 EXISTING SITE PLAN
- EX2 EXISTING RESTROOM PLAN & PHOTOS
- EC1 EROSION CONTROL PLAN
- D1 DEMOLITION PLAN
- G1 GRADING/SITE RESTORATION PLAN

DAIRY DR CAMPGROUND DEMO & SITE RESTORATION
 3202 DAIRY DRIVE
 MADISON, WI

CONTRACT	#9681
MUNIS	#67001
DRWN BY:	LA
DATE	09/03/25
REV:	XX/XX/XX

TITLE SHEET & GEN NOTES

TS1





CITY OF MADISON
DEPT OF PUBLIC WORKS
ENGINEERING DIVISION
300 SOUTH MICHIGAN, RM. 115
210 MARTIN LUTHER KING, JR. BLVD
MADISON, WI 53703
PHONE: 608-266-4751

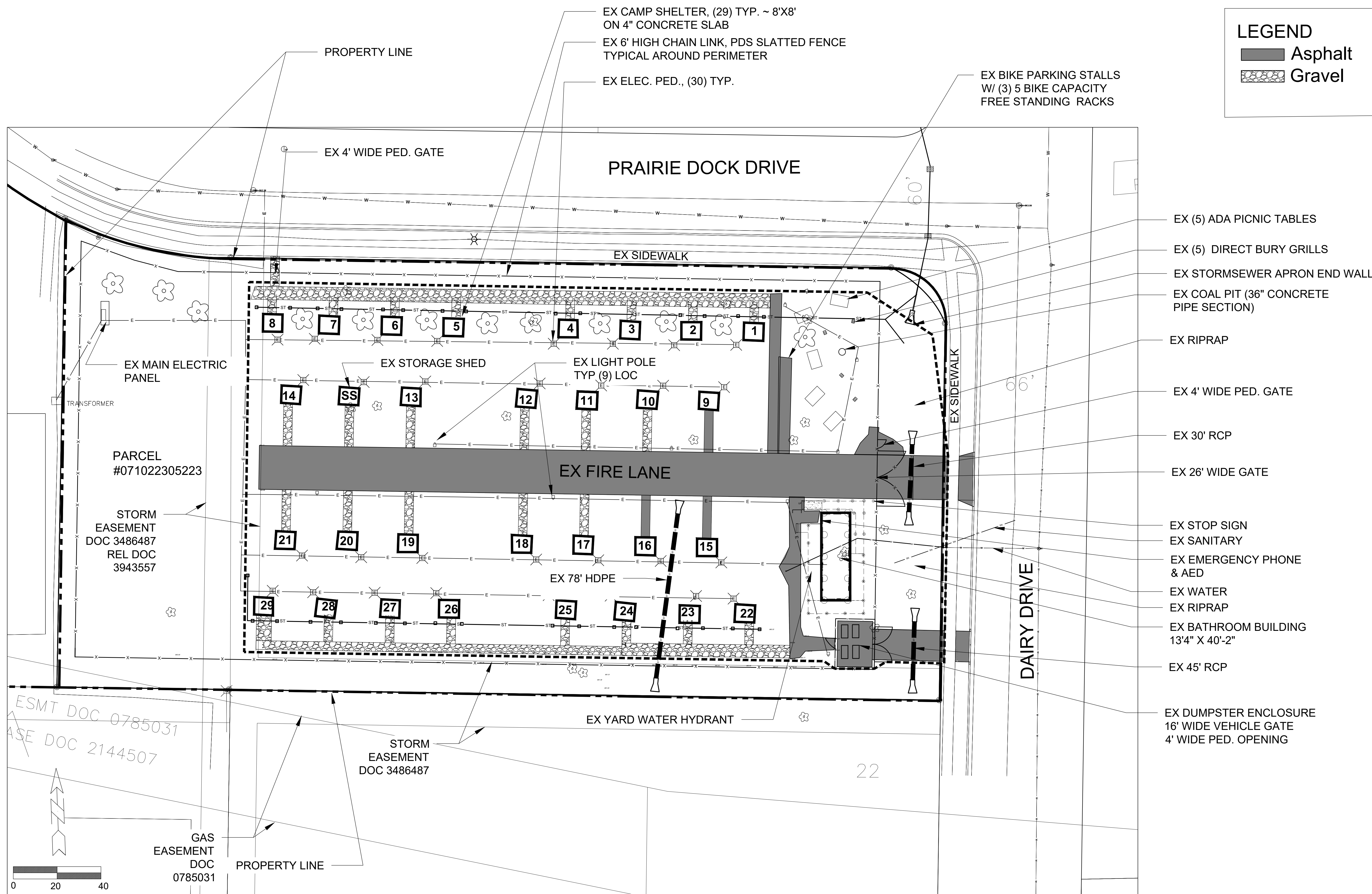
DAIRY DR CAMPGROUND DEMO & SITE RESTORATION
3202 DAIRY DRIVE
MADISON, WI

CONTRACT #9681
MUNIS #67001
DRWN BY: LA
DATE 09/03/25
REV: XX/XX/XX

EXISTING CONDITIONS

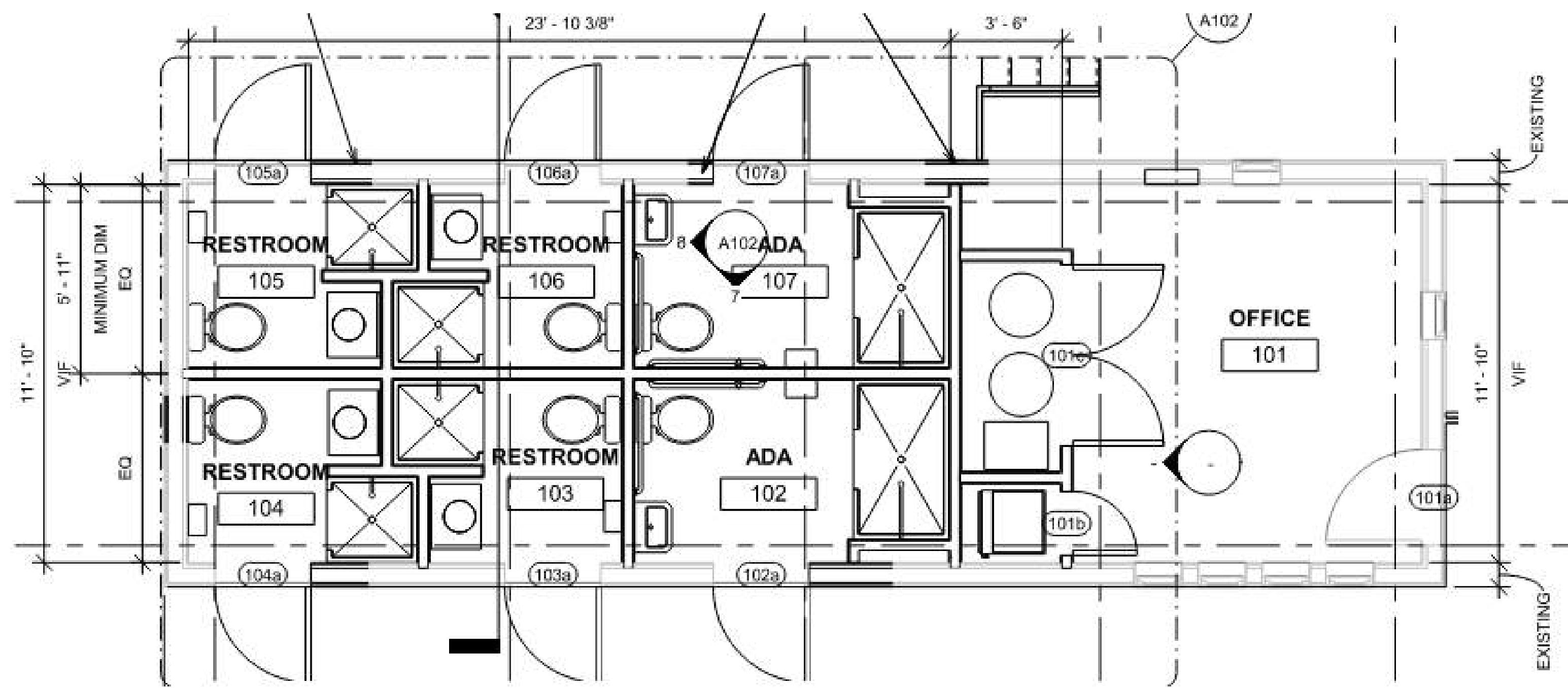
EX1

LEGEND
 Asphalt
 Gravel



EXISTING CONDITIONS

PLAN SCALE 24x36: 1"=20'



FLOOR PLAN OF EXISTING BATHROOM BUILDING
SEE BIDDING REFERENCE DOCS FOR EXISTING BUILDING PLANS



AERIAL VIEW FROM THE NORTHEAST CORNER LOOKING SOUTHWEST



TRASH ENCLOSURE



PICNIC/GRILL AREA



EXISTING BATHROOM/OFFICE BUILDING



EXISTING BATHROOM/OFFICE BUILDING



STORAGE SHED



SHELTERS



PERIMETER FENCING



FIRE LANE LOOKING EAST



CITY OF MADISON
DEPT OF PUBLIC WORKS
ENGINEERING DIVISION
CITY COUNTY BLDG RM 115
210 MARTIN LUTHER KING JR BLVD
MADISON, WI 53703
PHONE: 608-266-4751

DAIRY DR CAMPGROUND DEMO & SITE RESTORATION
3202 DAIRY DRIVE
MADISON, WI

CONTRACT
#9681
MUNIS
#67001
DRWN BY: LA
DATE 09/03/25
REV: XX/XX/XX

EXISTING R.R.
PLAN &
PHOTOS
EX2



CITY OF MADISON
DEPT. OF PUBLIC WORKS
ENGINEERING DIVISION
CITY COUNTY BLDG. RM. 115
MADISON, WI 53703
PHONE: 608-266-4751

DAIRY DR CAMPGROUND DEMO & SITE RESTORATION
3202 DAIRY DRIVE
MADISON, WI

CONTRACT #9681
MUNIS #67001
DRWN BY: LA
DATE 09/03/25
REV: XX/XX/XX

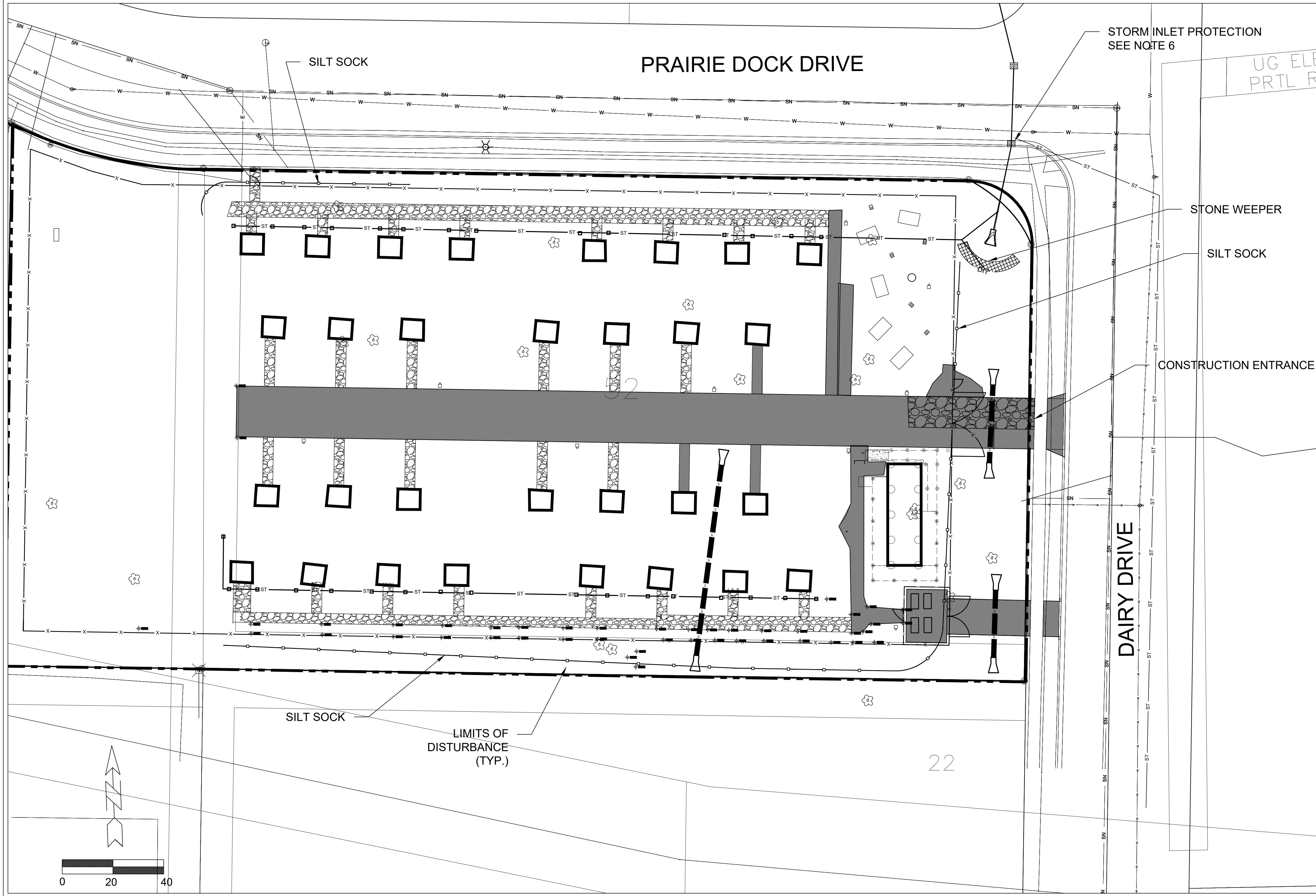
GRADING & EROSION CONTROL
EC1

GENERAL NOTES

1. ALL WORK SHALL BE PER THE CITY OF MADISON STANDARD SPECIFICATIONS
2. IF ANY ERRORS, DISCREPANCIES, OR DIMENSIONS WITH PLAN BECOME APPARENT. IT SHALL BE BROUGHT TO THE ATTENTION OF THE ENGINEER PRIOR TO CONSTRUCTION

EROSION CONTROL NOTES:

1. ALL EROSION CONTROL MEASURES SHALL BE CONSTRUCTED AND MAINTAINED BY THE CONTRACTOR IN ACCORDANCE WITH THE WISCONSIN DNR TECHNICAL STANDARDS AND CITY OF MADISON STANDARD SPECIFICATIONS.
2. INSTALL EROSION CONTROL MEASURES PRIOR TO ANY SITE WORK, MODIFICATIONS TO SEDIMENT CONTROL DESIGN MAY BE CONDUCTED TO MEET UNFORESEEN FIELD CONDITIONS. THE CONTRACTOR SHALL PLACE SILT SOCK OR SILT FENCE AT THE DIRECTION OF THE CONSTRUCTION ENGINEER.
3. EROSION CONTROL MEASURES INDICATED ON THE PLANS SHALL BE CONSIDERED MINIMUMS. IF DETERMINED NECESSARY DURING CONSTRUCTION ADDITIONAL MEASURES SHALL BE INSTALLED TO PREVENT SEDIMENT FROM LEAVING THE SITE.
4. THE CONTRACTOR IS RESPONSIBLE FOR THE CONSTRUCTION AND MAINTENANCE OF ALL EROSION CONTROL MEASURES UNTIL FINAL ACCEPTANCE BY THE CITY OF MADISON
5. NO SITE GRADING OUTSIDE OF THE LIMITS OF DISTURBANCE
6. INSTALL TYPE D INLET PROTECTION IN ALL STORM SEWER INLETS AND CATCH BASINS THAT MAY RECEIVE RUNOFF FROM DISTURBED AREAS
7. CUT AND FILL SLOPES SHALL BE NO GREATER THAN 3:1
8. ALL DISTURBED AREAS SHALL BE STABILIZED WITH CLASS I, TYPE B EROSION MATTING AND ALL DRAINAGE SWALES SHALL BE STABILIZED WITH CLASS II, TYPE C EROSION MATTING.
9. ALL INCIDENTAL MUD TRACKING OFF-SITE ONTO ADJACENT PUBLIC THOROUGHFARES SHALL BE CLEANED UP AND REMOVED BY THE END OF EACH WORKING DAY USING PROPER DISPOSAL METHODS.
10. PREVENT EXCESSIVE DUST FROM LEAVING THE CONSTRUCTION SITE IN ACCORDANCE WITH LOCAL AND STATE REGULATIONS.
11. INSTALL EROSION CONTROLS ON THE DOWNSTREAM SIDE OF STOCKPILES.
12. LIMITS OF DISTURBANCE = 79,440 SQ FT +/-



EROSION CONTROL PLAN

PLAN SCALE 24x36: 1"=20'



CITY OF MADISON
 DEPT OF PUBLIC WORKS
 ENGINEERING DIVISION
 CITY ENGINEER: RAYMOND J. HANSEN
 210 MARTIN LUTHER KING JR BLVD
 MADISON, WI 53703
 PHONE: 608-266-4751

DAIRY DR CAMPGROUND DEMO & SITE RESTORATION
 3202 DAIRY DRIVE
 MADISON, WI

CONTRACT #9681
 MUNIS #67001
 DRWN BY: LA
 DATE 09/03/25
 REV1 09/22/25

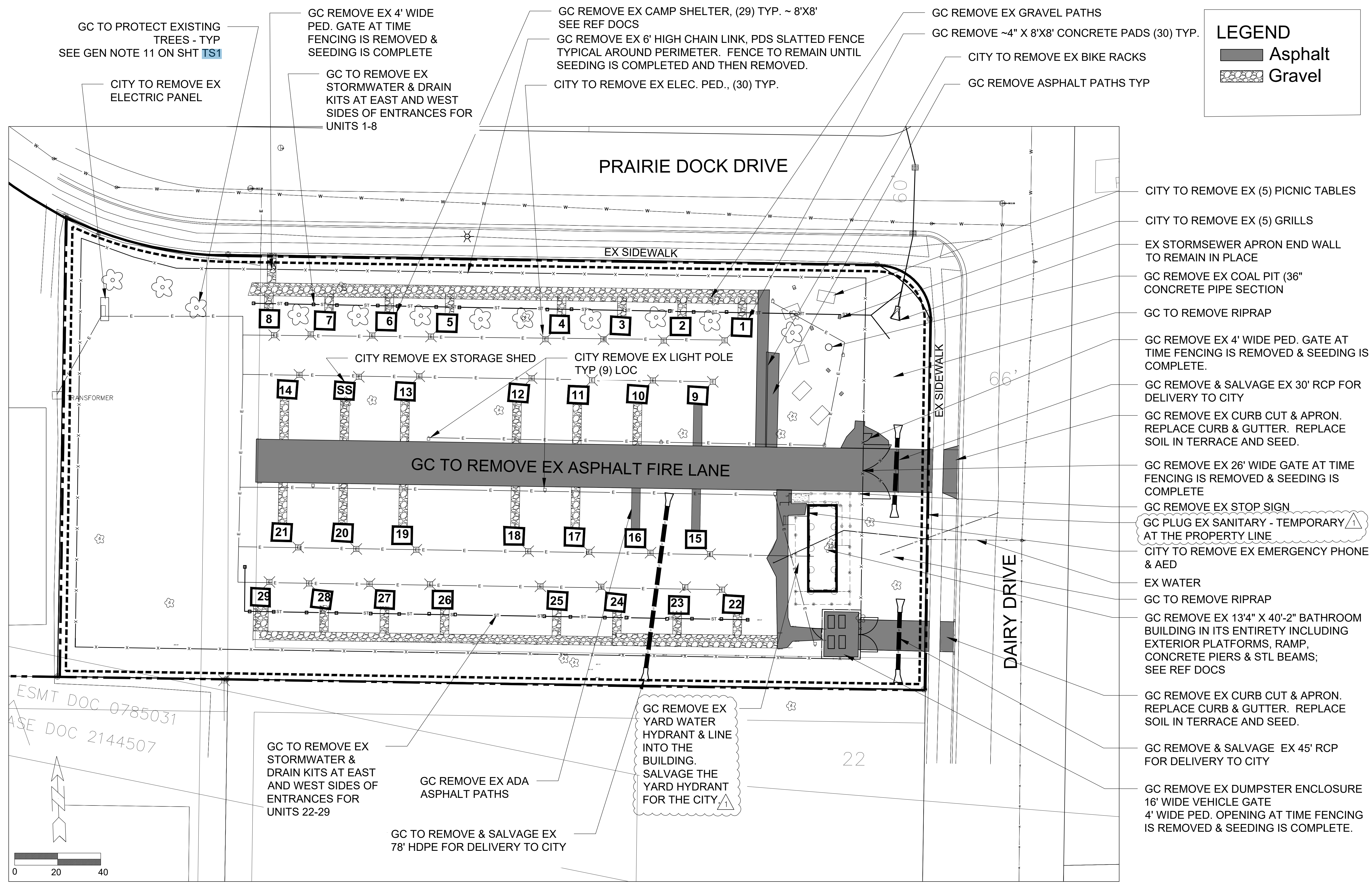
DEMOLITION

D1

LEGEND

Asphalt

Gravel



GC TO PROTECT EXISTING TREES - TYP SEE GEN NOTE 11 ON SHT **TS1**

CITY TO REMOVE EX ELECTRIC PANEL

GC REMOVE EX 4' WIDE PED. GATE AT TIME FENCING IS REMOVED & SEEDING IS COMPLETE

GC TO REMOVE EX STORMWATER & DRAIN KITS AT EAST AND WEST SIDES OF ENTRANCES FOR UNITS 1-8

GC REMOVE EX CAMP SHELTER, (29) TYP. ~ 8'X8' SEE REF DOCS

GC REMOVE EX 6' HIGH CHAIN LINK, PDS SLATTED FENCE TYPICAL AROUND PERIMETER. FENCE TO REMAIN UNTIL SEEDING IS COMPLETED AND THEN REMOVED.

CITY TO REMOVE EX ELEC. PED., (30) TYP.

GC REMOVE EX GRAVEL PATHS

GC REMOVE ~4" X 8'X8' CONCRETE PADS (30) TYP.

CITY TO REMOVE EX BIKE RACKS

GC REMOVE ASPHALT PATHS TYP

PRAIRIE DOCK DRIVE

EX SIDEWALK

EX SIDEWALK

DAIRY DRIVE

8 7 6 5 4 3 2 1

14

SS

13

12

11

10

9

21

20

19

18

17

16

15

29

28

27

26

25

24

23

22

22

GC TO REMOVE EX STORMWATER & DRAIN KITS AT EAST AND WEST SIDES OF ENTRANCES FOR UNITS 22-29

GC REMOVE EX ADA ASPHALT PATHS

GC TO REMOVE & SALVAGE EX 78' HDPE FOR DELIVERY TO CITY

GC REMOVE EX YARD WATER HYDRANT & LINE INTO THE BUILDING. SALVAGE THE YARD HYDRANT FOR THE CITY.

CITY REMOVE EX STORAGE SHED

CITY REMOVE EX LIGHT POLE TYP (9) LOC

GC TO REMOVE EX ASPHALT FIRE LANE

CITY TO REMOVE EX (5) PICNIC TABLES

CITY TO REMOVE EX (5) GRILLS

EX STORMSEWER APRON END WALL TO REMAIN IN PLACE

GC REMOVE EX COAL PIT (36" CONCRETE PIPE SECTION

GC TO REMOVE RIPRAP

GC REMOVE EX 4' WIDE PED. GATE AT TIME FENCING IS REMOVED & SEEDING IS COMPLETE.

GC REMOVE & SALVAGE EX 30' RCP FOR DELIVERY TO CITY

GC REMOVE EX CURB CUT & APRON. REPLACE CURB & GUTTER. REPLACE SOIL IN TERRACE AND SEED.

GC REMOVE EX 26' WIDE GATE AT TIME FENCING IS REMOVED & SEEDING IS COMPLETE

GC REMOVE EX STOP SIGN

GC PLUG EX SANITARY - TEMPORARY AT THE PROPERTY LINE

CITY TO REMOVE EX EMERGENCY PHONE & AED

EX WATER

GC TO REMOVE RIPRAP

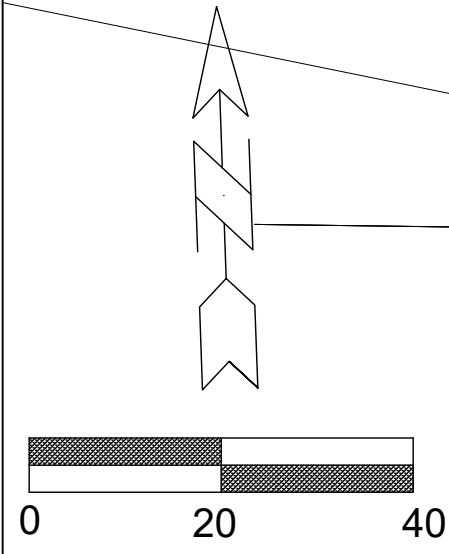
GC REMOVE EX 13'4" X 40'-2" BATHROOM BUILDING IN ITS ENTIRETY INCLUDING EXTERIOR PLATFORMS, RAMP, CONCRETE PIERS & STL BEAMS; SEE REF DOCS

GC REMOVE EX CURB CUT & APRON. REPLACE CURB & GUTTER. REPLACE SOIL IN TERRACE AND SEED.

GC REMOVE & SALVAGE EX 45' RCP FOR DELIVERY TO CITY

GC REMOVE EX DUMPSTER ENCLOSURE 16' WIDE VEHICLE GATE 4' WIDE PED. OPENING AT TIME FENCING IS REMOVED & SEEDING IS COMPLETE.

ESMT DOC 0785031
 ASE DOC 2144507



DEMOLITION PLAN

PLAN SCALE 24x36: 1"=20'



CITY OF MADISON
 DEPT. OF PUBLIC WORKS
 ENGINEERING DIVISION
 210 MARTIN LUTHER KING JR BLVD
 MADISON, WI 53703
 PHONE: 608-266-4751

DAIRY DR CAMPGROUND DEMO & SITE RESTORATION
 3202 DAIRY DRIVE
 MADISON, WI

CONTRACT #9681
 MUNIS #67001
 DRWN BY: LA
 DATE 09/03/25
 REV: XX/XX/XX

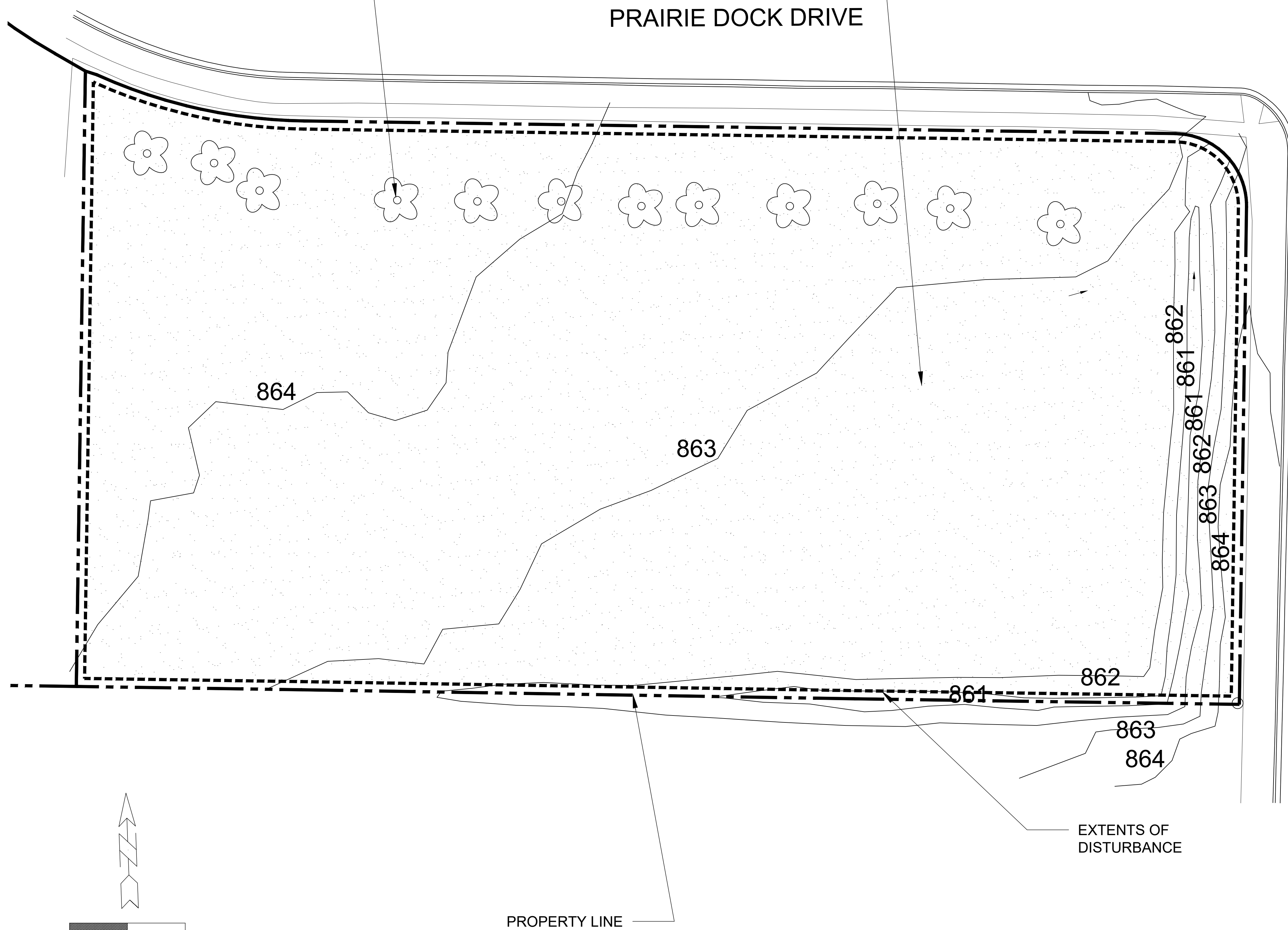
GRADING & SITE RESTORATION
 G1

PROTECT TREES
 DURING ENTIRE CONTRACT W/ FENCING
 SEE GENERAL NOTE #11 ON SHT **TS1**

SITE RESTORATION AREA
 6" CLEAN FILL, 6" TOP SOIL, AND SEEDING AS REQ'D.
 SEE PUBLIC WORKS STANDARD SPECIFICATIONS
 EROSION MATTING TO BE CLASS 1 URBAN TYPE A

PRAIRIE DOCK DRIVE

DAIRY DRIVE



GRADING & SITE RESTORATION PLAN

PLAN SCALE 24x36: 1"=20'

AREA OF SITE RESTORATION